

Photo 1: Gram Stain - 400X

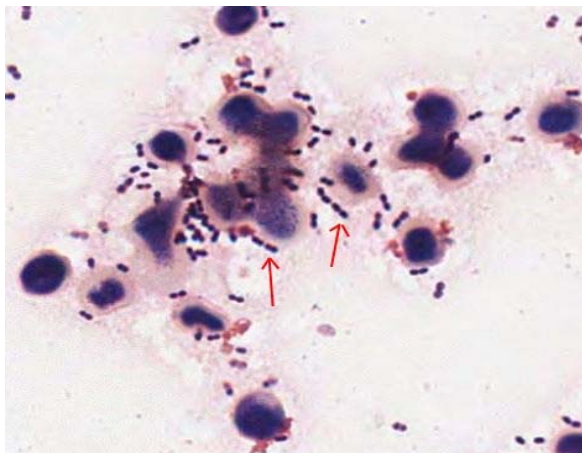


Photo 2: Gram Stain - 1000X

Cerebral Spinal Fluid 1STQ 2011

A 12 year old female with a recent history of a severe respiratory infection has come in reporting continuous debilitating headaches, fever and nausea. A spinal tap was ordered and a gram stain performed as shown here.

Identify the smaller structures indicated by the red arrows in these two micrographs.