

Urine Sediment

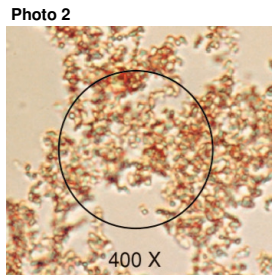
Photo 1	Number	Flagging
Hyaline Cast	425	
Cast, noncellular	23	
Would refer	9	
Granular Cast	5	***
Waxy Cast	4	***
Mucous Strands	3	***
Crystals present	1	***
Epithelial Cell	1	***
Cylindroids	1	***
Cast, cellular	1	***
Cylindroids	1	***
Pseudocast	1	***
Bacteria	1	***
Total Population	476	

Intended result was Hyaline Cast.



Photo 2	Number	Flagging
Amorphous Phosphates/Urates	427	
Would refer	16	***
Bacteria	7	***
Yeast - budding	6	***
RBCs , blood	4	***
WBC clumped	4	***
Crystals present	3	
Crystal, not listed above	2	***
Red Blood Cell Cast	2	***
Artifact/Other	2	***
Ammonium Biurate	1	***
Yeast - pseudohyphae	1	***
Total Population	475	

Intended result was Amorphous Phosphates/Urates.



Educational Challenge	Number	Flagging
Starch	300	
Talcum Powder	80	
Would refer	8	
Artifact, other	7	
Leucine Crystals	7	
Crystal, not listed above	5	
Crystals present	5	
WBC's	4	
Uric Acid Crystals	2	
WBC Any form	2	
Air bubble	2	
Calcium Oxalate Crystals	2	
Epithelial Cell	2	
Squamous epithelial cell	2	
Pollen	2	
Fat Globules	2	
Artifact/Other	2	
Epithelial Cell Cast	1	
Leucine	1	
Macrophage	1	
RBC Ghost	1	
Clue cell	1	
Renal Tubular Epi Cell	1	
Granular Cast	1	
Ammonium Biurate	1	
Calcium Monohydrate Crys	1	
Yeast - budding	1	
Total Population	444	

Intended result was Starch.

