



Urine Sediment

Photo 1	Number	Flagging
Bacteria	327	
Yeast - budding	44	***
Would refer	7	
RBCs , blood	7	***
Amorphous Phosphates/Urates	4	***
RBCs , blood	2	***
WBC's	2	***
Yeast - pseudohyphae	2	***
Calcium Oxalate Crystals	1	***
Ammonium Biruate	1	***
Amorphous Phosphates/Urates	1	***
WBC clumped	1	***
Granular Cast	1	***
Fungal hyphae or Pseudohyphae	1	***
Artifact/Other	1	***
Total Population	402	

Intended result was Bacteria.

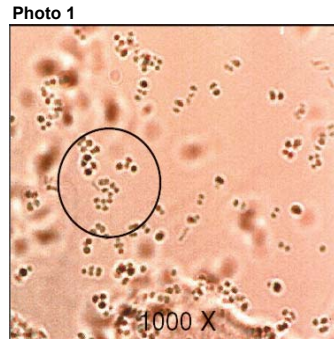


Photo 2	Number	Flagging
Granular Cast	292	
Red Blood Cell Cast	56	***
Blood/Hemoglobin Cast	21	
Cast, cellular	10	***
Would refer	9	
Cast, noncellular	7	
White Blood Cell Cast	2	***
Hyaline Cast	2	***
Waxy Cast	2	***
Calcium Oxalate Crystals	1	***
Artifact/Other	1	***

Total Population 403
Intended result was Granular Cast.



Educational Challenge	Number	Flagging
Transitional Epi Cell	187	
Renal Tubular Epi Cell	113	
Malignant/tumor cells	24	
Epithelial Cell	11	
Would refer	8	
Trichomonads	7	
WBC's	3	
Air bubble	2	
Yeast - budding	2	
WBC Any form	1	
Broad Cellular Cast	1	
Calcium Oxalate Crystals	1	
WBC, non-macrophage	1	
Epithelial Cell Cast	1	
Artifact, other	1	
Macrophage	1	
Squamous epithelial cell	1	
Waxy Cast	1	

Total Population 366
Intended result was Transitional Epithelial.

