

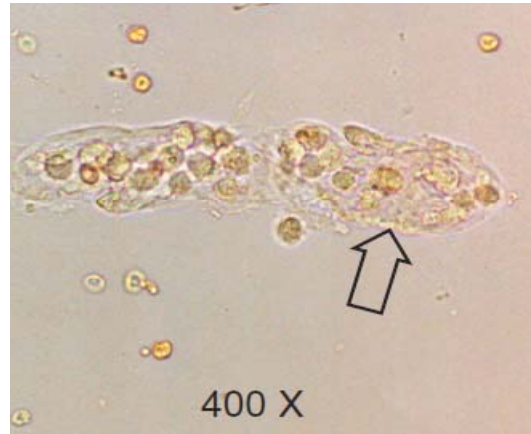
**PARTICIPANT STATISTICS**

**URINE SEDIMENT**

**SECOND QUADRIMESTER 2011**

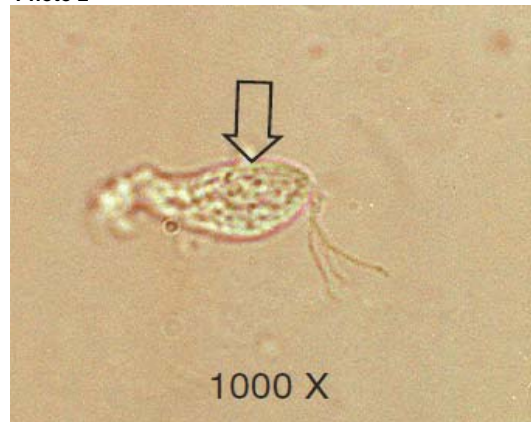
| Photo 1                                        | Number | Flagging |
|------------------------------------------------|--------|----------|
| White Blood Cell Cast                          | 564    |          |
| Red Blood Cell Cast                            | 221    | *****    |
| Mixed Cell Cast                                | 191    |          |
| Cast, Cellular                                 | 84     |          |
| Would refer                                    | 6      |          |
| WBC Any form                                   | 4      | *****    |
| Blood/Hemoglobin Cast                          | 3      | *****    |
| Broad Cellular Cast                            | 2      | *****    |
| Crystal, not specified                         | 1      | *****    |
| RBC any form                                   | 1      | *****    |
| Pseudocast                                     | 1      | *****    |
| Macrophage                                     | 1      | *****    |
| Red Blood Cell                                 | 1      | *****    |
| WBC Clumped                                    | 1      | *****    |
| Clue Cell                                      | 1      | *****    |
| <i>Total Population</i>                        | 1083   |          |
| <i>Intended result - White Blood Cell Cast</i> |        |          |

Photo 1



| Photo 2                              | Number | Flagging |
|--------------------------------------|--------|----------|
| Trichomonads                         | 1057   |          |
| Would refer                          | 8      |          |
| Epithelial Cell                      | 2      | *****    |
| WBC Any form                         | 2      | *****    |
| Transitional Epit Cell               | 2      | *****    |
| Yeast - budding                      | 2      | *****    |
| Renal Tubular Epi Cells              | 1      | *****    |
| Squamous epithelial cell             | 1      | *****    |
| Ammonium Biruate                     | 1      | *****    |
| Crystal, not listed above            | 1      | *****    |
| Fungal Hyphae                        | 1      | *****    |
| Ovum/Ova - Pinworm                   | 1      | *****    |
| Air Bubble                           | 1      | *****    |
| <i>Total Population</i>              | 1083   |          |
| <i>Intended result - Trichomonad</i> |        |          |

Photo 2



| Educational Challenge                      | Number | Flagging |
|--------------------------------------------|--------|----------|
| Bilirubin                                  | 727    |          |
| Ammonium Biruate                           | 165    |          |
| Tyrosine                                   | 96     |          |
| Leucine                                    | 21     |          |
| Pollen                                     | 11     |          |
| Would refer                                | 10     |          |
| Crystal, not specified                     | 5      |          |
| Crystal, not listed above                  | 3      |          |
| Cystine                                    | 2      |          |
| Radiographic Material                      | 2      |          |
| Artifact/Other                             | 1      |          |
| Broad Noncellular Cast                     | 1      |          |
| Amorphous Phosphates/Urates                | 1      |          |
| Glass Fragmeent/Flaw                       | 1      |          |
| <i>Total Population</i>                    | 1046   |          |
| <i>Intended result - Bilirubin Crystal</i> |        |          |

Educational Challenge

