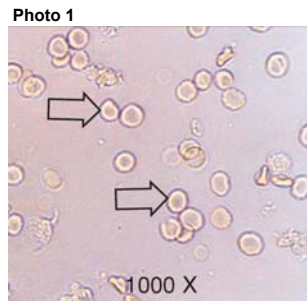




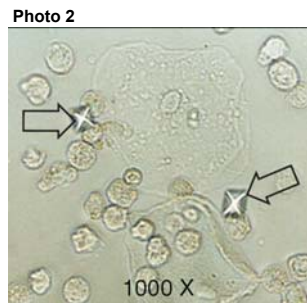
## Urine Sediment

Photo 1	Number	Flagging
RBCs , blood	419	
Would refer	9	***
Red Blood Cell Cast	2	***
Renal Tubular Epi Cell	1	***



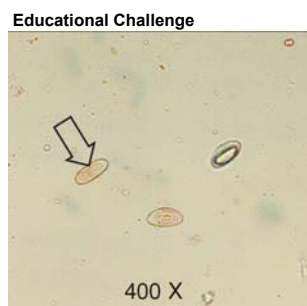
**Total Population** 431  
*Intended result was RBCs, blood.*

Photo 2	Number	Flagging
Calcium Oxalate Crystals	464	
Would refer	9	
Crystals present	5	
Triple Phosphate Crystals	4	***
Artifact/Other	1	***



**Total Population** 483  
*Intended result was Calcium Oxalate Crystals.*

Educational Challenge	Number	Flagging
Ovum/Ova - Pinworm	288	
Pinworm	119	
Would refer	12	
Calcium Oxalate Crystals	4	
Calcium Monohydrate Crys	4	
WBC's	3	
Crystals present	2	
Mucous Strands	2	
Uric Acid Crystals	1	
Epithelial Cell	1	
Cast, cellular	1	
Hyaline Cast	1	
Oval Fat Bodies	1	
Starch	1	
Granular Cast	1	
Hyaline Cast	1	
Artifact/Other	1	
Bacteria	1	



**Total Population** 444  
*Intended result was Pinworm Ova.*