

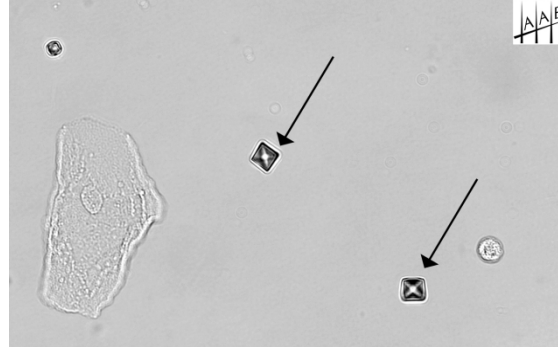


## Urine Sediment

### Photo 1

	Number	Flagging
Calcium Oxalate Crystals	246	
Crystal, not specified	5	
Would refer	2	
Crystal, not listed above	2	***
Granular Cast	1	***
Calcium Monohydrate	1	***

### Photo 1



### Total Population

257

Intended result was calcium oxalate crystals.

### Photo 2

Hyaline Cast	170	
Granular Cast	46	
Cast, noncellular	14	
Cylindroids	8	***
Cast, cellular	5	***
Red Blood Cell Cast	3	***
Broad Noncellular Cast	3	***
Would refer	1	
Calcium Oxalate Crystals	1	***
Epithelial Cell Cast	1	***
Blood/Hemoglobin Cast	1	***
Fatty Cast	1	***
Waxy Cast	1	***
<b>Total Population</b>	<b>255</b>	

### Photo 2

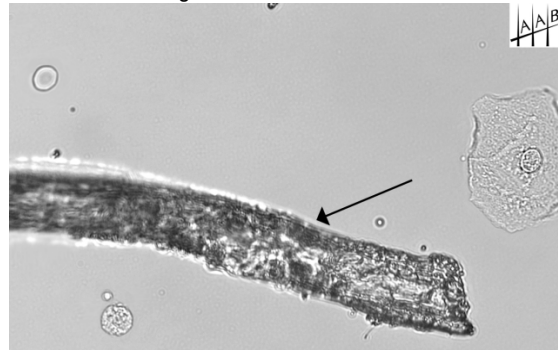


Intended result was hyaline cast.

### Educational Challenge

	Number	Flagging
Hair/Fiber	168	
Artifact, other	46	
Cylindroids	13	
Would refer	5	
Waxy Cast	3	
Glass Fragment/Flaw	2	
Calcium Oxalate Crystals	1	
Mixed Cellular Cast	1	
Red Blood Cell Cast	1	
Granular Cast	1	

### Educational Challenge



### Total Population

241

Intended result was hair/fiber.