

PARTICIPANT STATISTICS

URINE SEDIMENT

THIRD QUADRIMESTER 2011

Photo 1	Number	Flagging
Bacteria	821	
Yeast - budding	121	*****
Amorphous Phosphates/Urates	33	*****
Yeast - pseudohyphae	31	*****
Would refer	25	
Fungal Hyphae or Pseudohyphae	20	*****
RBC any form	9	*****
Artifact/Other	4	*****
Red Blood Cell Cast	3	*****
Crystal, not specified	2	*****
White Blood Cell Cast	2	*****
Red Blood Cell	2	*****
Crystal, not listed above	2	*****
Macrophage	1	*****
Ammonium Biruate	1	*****
<i>Total Population</i>	1079	
<i>Intended result - Bacteria</i>		
<i>21 of 23 referee laboratories reported Bacteria</i>		

Photo 1

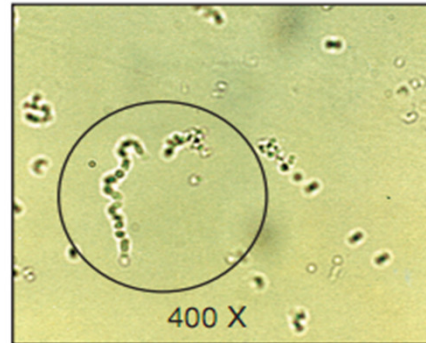
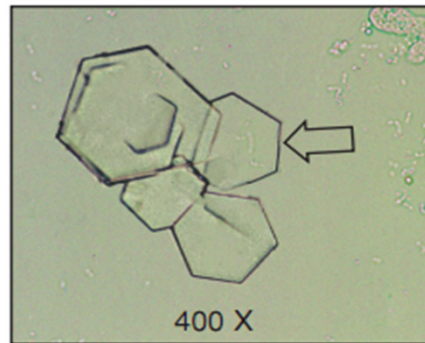


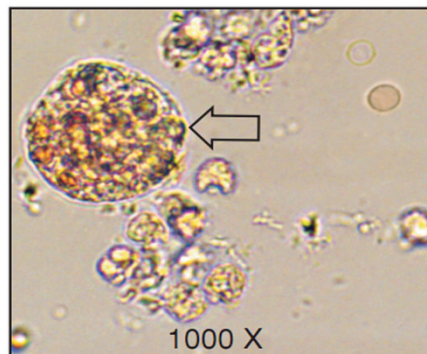
Photo 2	Number	Flagging
Cystine	1026	
Uric Acid	22	*****
Crystal, not specified	11	*****
Calcium Oxalate	8	*****
Would refer	4	*****
Leucine	2	*****
Fungal Hyphae or Pseudohyphae	1	*****
Ammonium Biruate	1	*****
Cholesterol	1	*****
Tyrosine	1	*****
<i>Total Population</i>	1080	
<i>Intended result - Cystine</i>		

Photo 2



Educational Challenge	Number	Flagging
Oval Fat Bodies	390	
Macrophage	336	
WBC Any form	90	
Fat Globules	47	
Renal Tubular Epi Cells	44	
Would refer	38	
WBC Clumped	15	
Transitonal Epit Cell	12	
White Blood Cell Cast	9	
Squamous epithelial cell	5	
Granular Cast	4	
Clue Cell	4	
Artifact/Other	3	
Epithelial Cell	3	
Broad Cellular Cast	2	
Epithelial Cell Cast	2	
Red Blood Cell Cast	2	
WBC, non-macrophage	2	
Oil Droplet	2	
Mixed Cell Cast	1	
Broad Noncellular Cast	1	
<i>Total Population</i>	1080	
<i>Intended result - Macrophage</i>		

Educational Challenge



Correct responses are defined as those reflecting agreement among 80% or more of all participants. Unacceptable responses are indicated by "*****" on the Flagging line of each specimen.