

**PARTICIPANT STATISTICS**

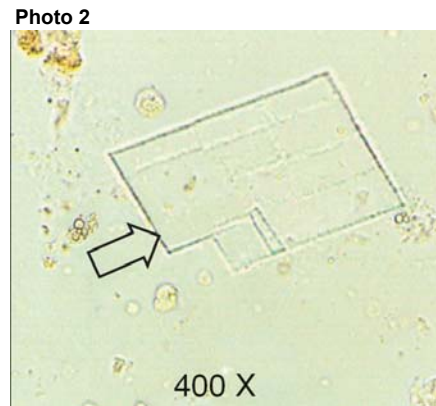
**URINE SEDIMENT**

**THIRD QUADRIMESTER 2016**

<b>Photo 1</b>	Number	Flagging
Trichomonads	576	
Would refer	3	
WBC's	1	***
Starch	1	***
Fungal hyphae or Pseudohyphae	1	***
<b>Total Population</b>	<b>582</b>	
<i>Intended result was Trichomonas</i>		



<b>Photo 2</b>	Number	Flagging
Cholesterol Crystals	522	
Glass Fragment/Flaw	16	***
Would refer	11	
Artifact/Other	11	***
Crystals present	9	
Triple Phosphate Crystals	3	***
Uric Acid Crystals	2	***
Radiographic Material	2	***
Crystal, not listed above	1	***
Cast, cellular	1	***
Hyaline Cast	1	***
Waxy Cast	1	***
<b>Total Population</b>	<b>580</b>	
<i>Intended result was Cholesterol Crystal</i>		



<b>Educational Challenge</b>	Number	Flagging
Hyaline Cast	186	
Cylindroids	175	
Cast, noncellular	24	
Artifact/Other	17	
Red Blood Cell Cast	14	
Mucous Strands	14	
Cylindroids	11	
Hyaline Cast	11	
Granular Cast	11	
Pseudocast	8	
White Blood Cell Cast	7	
Would refer	5	
Cast, cellular	4	
Waxy Cast	4	
Pseudocast	3	
Mixed Cellular Cast	3	
Fatty Cast	3	
Hair/Fiber	3	
Cholesterol Crystals	2	
Epithelial Cell	1	
Epithelial Cell Cast	1	
Renal Tubular Epi Cell	1	
Blood/Hemoglobin Cast	1	
Bacteria	1	
<b>Total Population</b>	<b>510</b>	
<i>Intended result was Cylindroid</i>		



Correct responses are defined as those reflecting agreement among 80% or more of all participants. Unacceptable responses are indicated by "\*\*\*\*\*" on the Flagging line of each specimen.