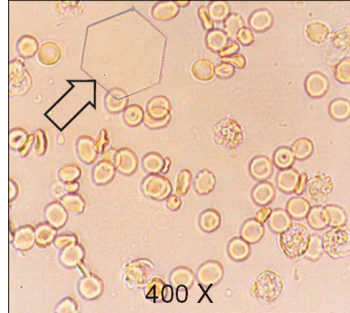


Urine Sediment

Photo 1	Number	Flagging
Cystine Crystals	445	
Would refer	12	
Uric Acid Crystals	6	***
Crystals present	5	
Calcium Oxalate Crystals	4	***
Artifact/Other	3	***
Epithelial Cell	1	***
Triple Phosphate Crystals	1	***
WBC's	1	***

Photo 1



Total Population 478
Intended result was Cystine Crystal

Photo 2	Number	Flagging
WBC's	384	
Macrophage	33	
Renal Tubular Epi Cell	13	***
Would refer	9	
WBC, non-macrophage	7	
Oval Fat Bodies	7	***
White Blood Cell Cast	5	***
RBCs , blood	2	***
Transitional Epi Cell	2	***
Cystine Crystals	1	***
Epithelial Cell	1	***
Cast, cellular	1	***
WBC clumped	1	***
Clue cell	1	***
Malignant/Tumor Cells	1	***
Trichomonads	1	***
Yeast - budding	1	***
Yeast - pseudohyphae	1	***

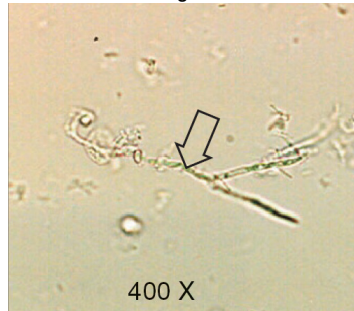
Photo 2



Total Population 471
Intended result was White Blood Cell.

Educational Challenge	Number	Flagging
Fungal hyphae or Pseudohyphae	392	
Yeast - budding	16	
Hair/Fiber	14	
Would refer	8	
Artifact, other	5	
Mucous Strands	2	
WBC Any form	1	
Calcium Oxalate Crystals	1	
Cystine Crystals	1	
Cast, cellular	1	
Trichomonads	1	

Educational Challenge



Total Population 442
Intended result was Fungal hyphae or Pseudohyphae.